

Wipeable Mattress Covers

This cover goes over the water mattress on your Sidmar S10 hydromassage table. The covers are made from an attractive and durable nylon. You simply remove your existing cover and put the new wipeable one in its place.

The wipeable cover allows you to simply wipe off the table after each use.

Remove the old mattress cover.



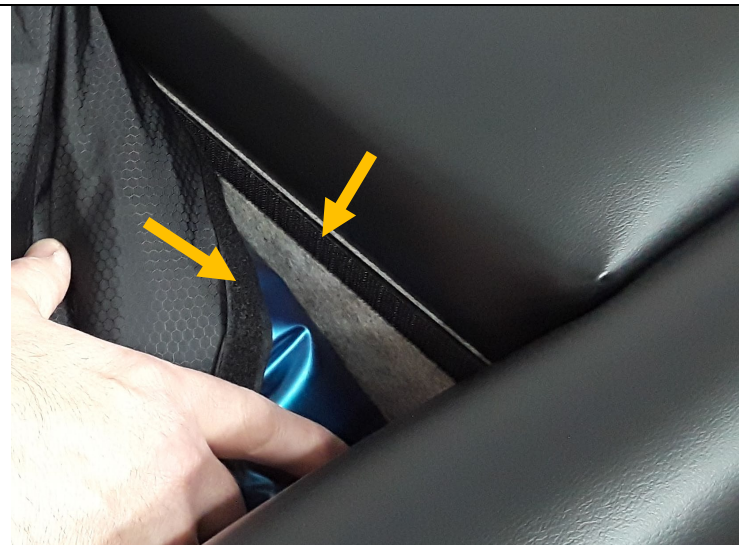
Place new cover over the water mattress with the Velcro end laying on the seat with the Velcro facing up.

The arrow is pointing to the Velcro.



Fold the Velcro end of the new cover downward to attach the Velcro on the cover to the Velcro on the table.





Tuck in around both sides of the water mattress and liner.



Tuck in the end of the water mattress and liner.

Now you can clean the table by simply wiping it down with warm soapy water or a disinfectant wipe.

